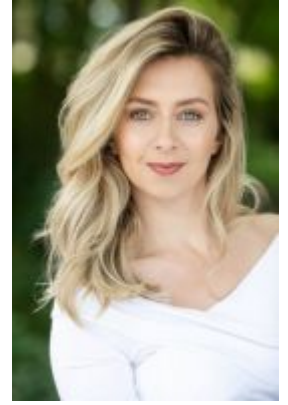


Eleanor Sanderson- Nash Soprano



East Sussex born, Eleanor graduated from the Masters course at Royal College of Music with Distinction in 2017 under the tutelage of Janis Kelly and Caroline Dowdle, where she was generously supported by a Martin Harris Award and a Charles Branchini Award, the Josephine Baker Trust, Friends of Music in Mayfield, The Lake House Charitable Foundation and the Tom Cocklin Memorial Trust. She earned a First Class Honours Bachelors degree from Royal Northern College of Music in 2015.

Recent engagements include Josephine *HMS Pinafore* (ENO), Yum Yum *The Mikado* (Opera Della Luna), Raina *The Chocolate Soldier* (IF Opera, Wilton's Music Hall), Papagena & cover 1st Lady *The Magic Flute* (Wild Arts), Sandman/Dew Fairy *Hansel and Gretel* (David Ross Education Trust), Mary Crawford *Mansfield Park* with Waterperry Opera Festival, cover Phyllis *Iolanthe* (ENO), Delia and cover Contessa di Folleville *Il Viaggio a Reims* (ETO), alongside creating the role of Lola *The Wish Gatherer*, one of ETO's Learning and Participation operas touring to schools and theatres across the country.

Eleanor was a finalist in the Royal Overseas League Annual Music Competition in 2018, the Maureen Lehane Vocal Awards in 2017 at Wigmore Hall, and won First Prize in the RCM Lieder Competition in 2017 where she also won the Ted Moss and Bertha Taylor-Stach Prize. She was a Young Artist at Opera Holland Park in 2017 and was a Swing in *Phantom of the Opera* in London's West End from 2019-2020.